

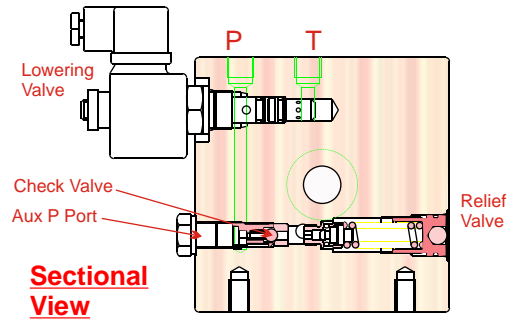
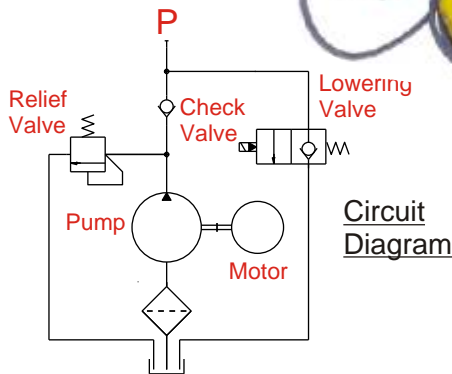
G SERIES POWER PACKS

Modern range of 12V & 24V dc
 Power Units for mobile applications
 Motors 1,6kW to 3kW (nom)
 Pressures to 300bar
 Flows to 25l/min



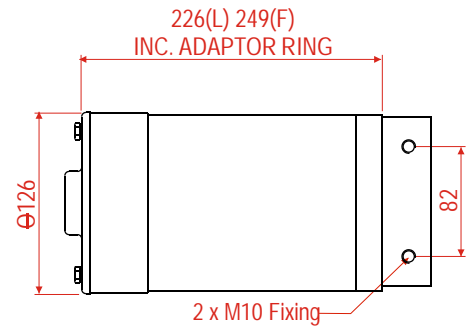
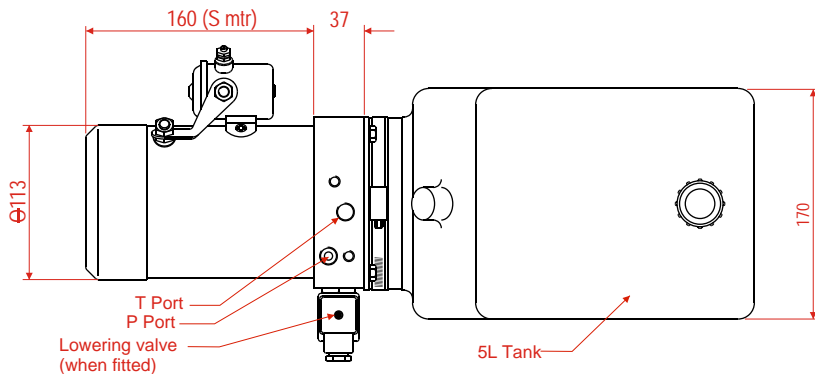
FEATURES

- Pressure balanced gear pumps
- Quiet operation with long life
- Precision "quiet" relief valve
- Wide range of options
- Global support & servicing

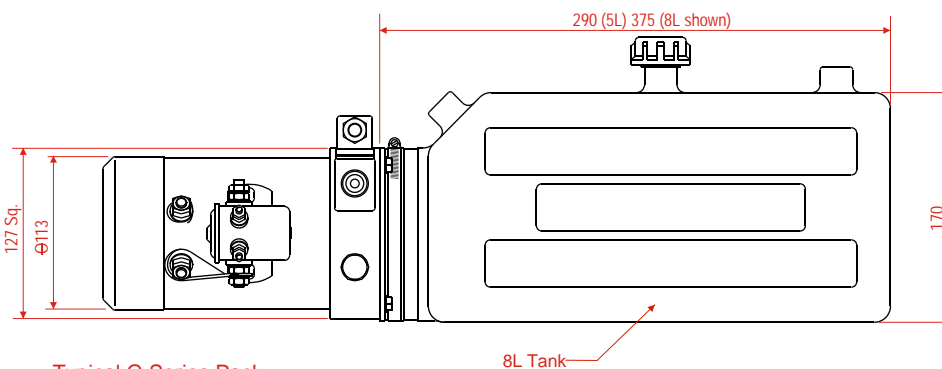


Ports Marked on Centre Plate

- P = Pressure Port 1/4" BSP
- T = Tank Port 1/4" BSP



Long Rated or Fan Cooled Motor
 View on underside showing
 2 x M10 fixing holes.



Typical G Series Pack
 Featuring 4.5" (113mm) S Motor
 Plastic 5L & 8L Tanks

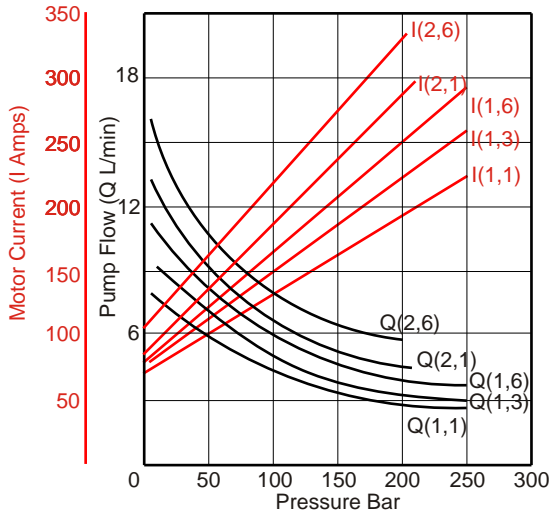
PERFORMANCE DATA G Series POWER PACKS

MOTOR TYPE S (Series Wound, $\varnothing 113\text{mm}$)

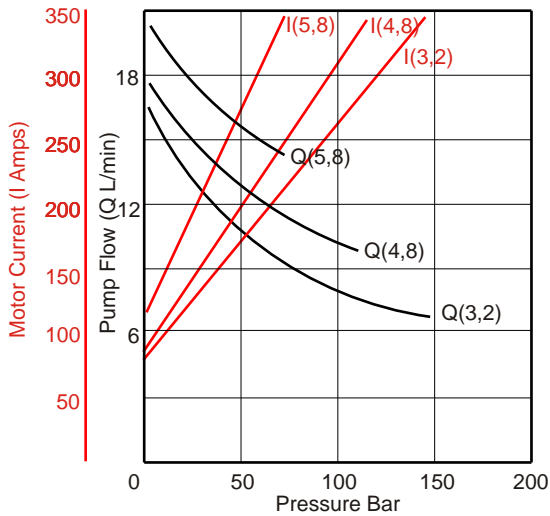
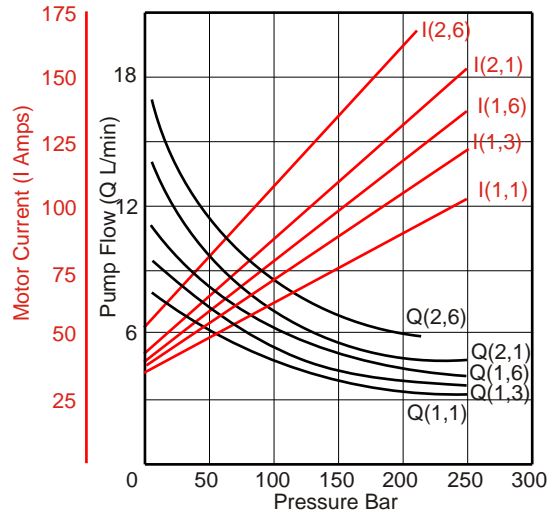
Nominal performance of pack combinations at constant voltage
and at nominal $20^{\circ}\text{-}25^{\circ}\text{C}$ with ISO VG22 oil.

12V Motor

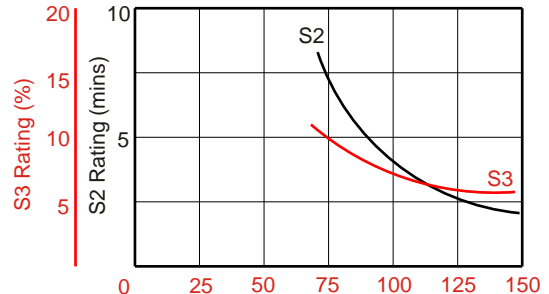
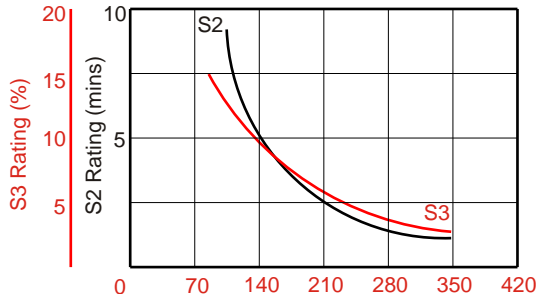
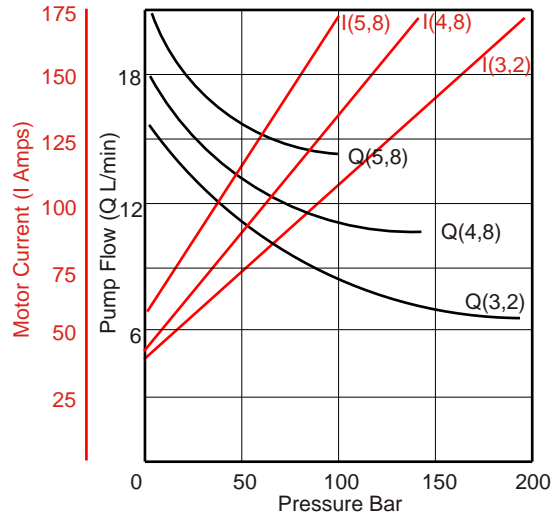
24V Motor



For Pump Capacities:
1,1cc/rev
1,3cc/rev
1,6cc/rev
2,1cc/rev
2,6cc/rev



For Pump Capacities:
3,2cc/rev
4,8cc/rev
5,8cc/rev

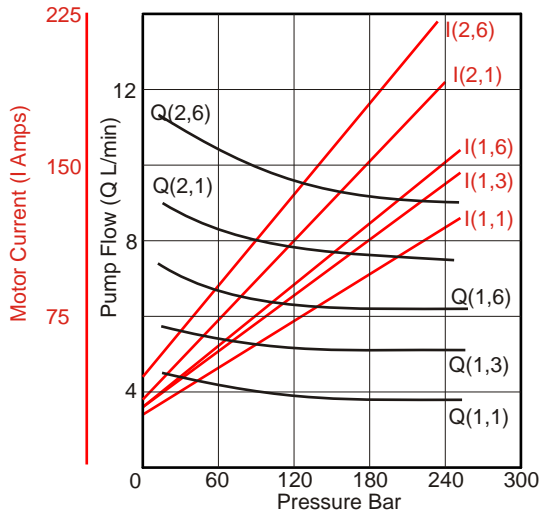


PERFORMANCE DATA G Series POWER PACKS

MOTOR TYPES L & F (Long Rated/Fan Cooled $\varnothing 126\text{mm}$)

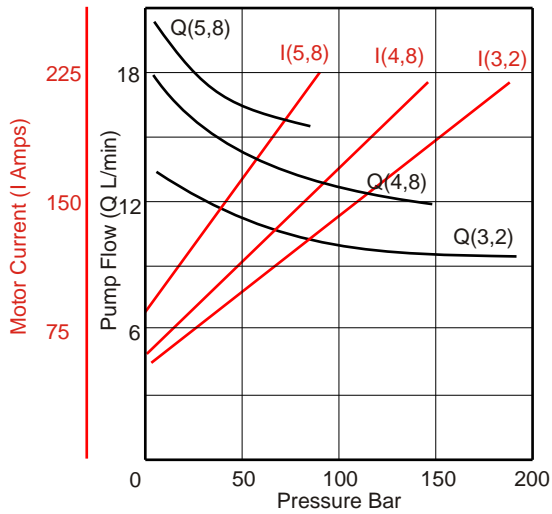
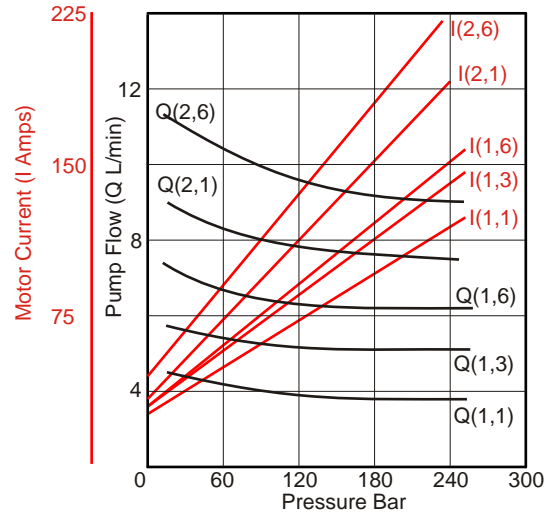
Nominal performance of pack combinations at constant voltage
and at nominal 20^o-25^o C with ISO VG22 oil.

24V 'L' Motor

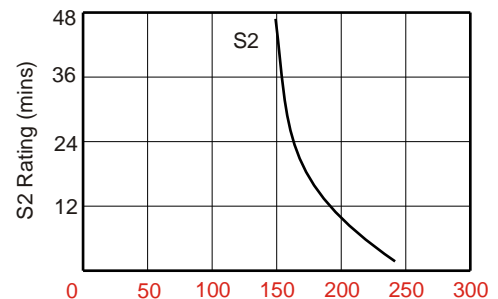
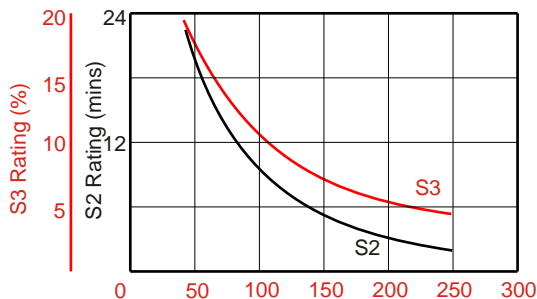
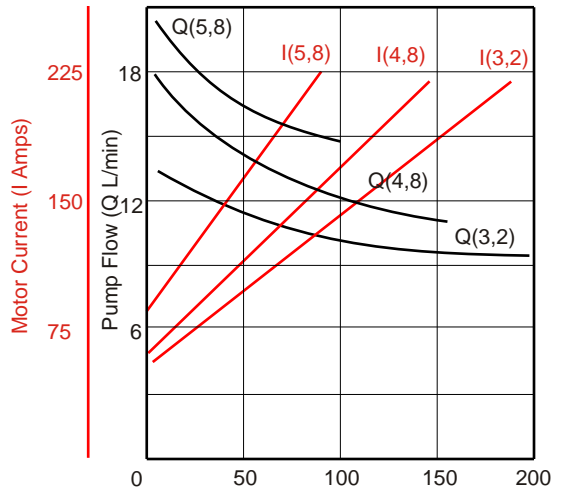


For Pump Capacities:
1,1cc/rev
1,3cc/rev
1,6cc/rev
2,1cc/rev
2,6cc/rev

24V 'F' Motor



For Pump Capacities:
3,2cc/rev
4,8cc/rev
5,8cc/rev



G Series POWER PACKS - TECHNICAL DATA

Hydraulic Fluid(recommended)

Mineral hydraulic oil (HM or HV)
For normal ambient temp range (0°C-40°C)
ISO VG22 to ISO VG46

Working temp (ambient) -20°C - +40°C

Weight

Typical assembly (dry) 11,5kg
Each additional litre tank capacity 1kg

Maximum Pressures (see performance curves)

1,1 to 2,6cc	275bar
3,2cc	240bar
4,8 5,8cc	200bar

Options Available

Lowering valves (N Closed N Open Double Lock)
Coil Voltages 12V 24V dc; 110V 230V 50/60Hz
Manual Override on lowering valves.
Flow Controls (full range 0,5l/m to 13l/m)
Heavy Duty Start Switch
Remote Start/Stop Switch Pendants

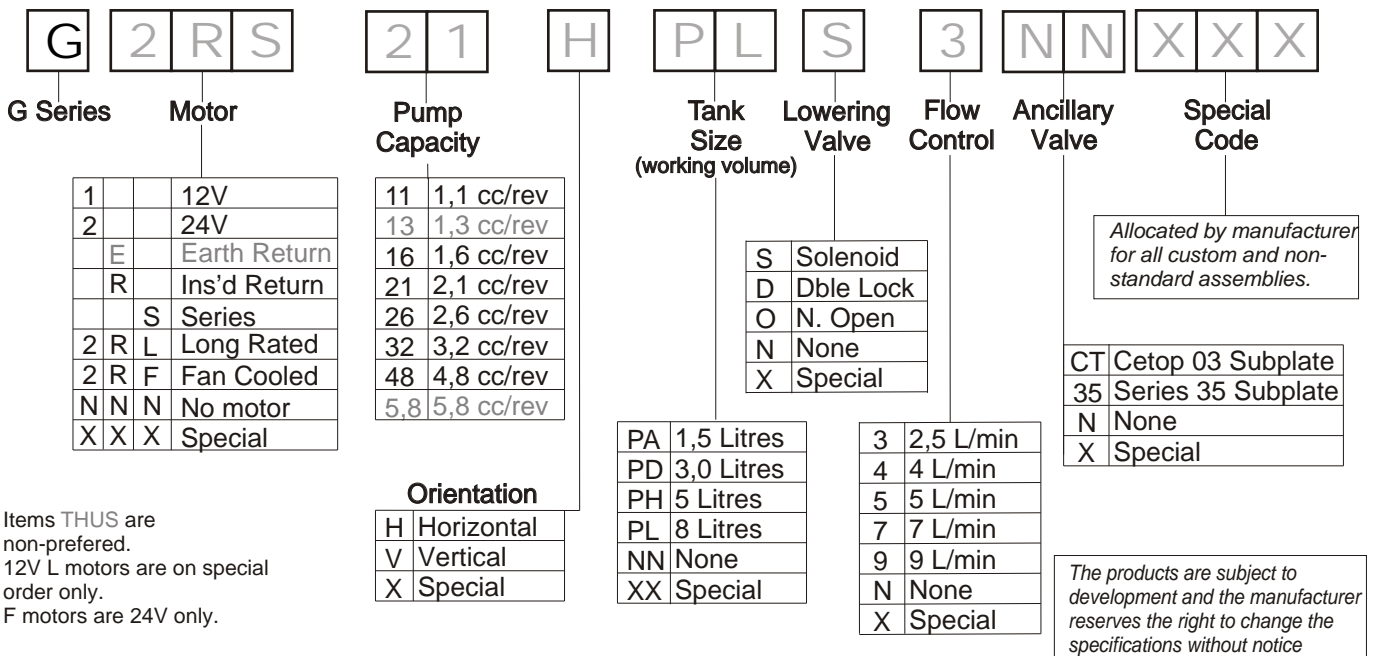
Manifolds & Control valves Cetop03
Manifolds & Control valves Series35
Special Valve Blocks (eg Dock Leveller)

Special Tanks
Weld Ring for Custom Tanks
Weatherproof Motor Cover

MAIN SPARES KITS

Pump Kit	KPG**01A	** = pump code ref	Centre Plate Kit	KCG0101A	
Seal Kit	KSKG01A		Cavity Plug Kit	KCPG01A	
Tank Kit	KTG**!01A	** = tank code ref	Drive Dog	99725-F11	
		! = H or V (see code)			** = 12 or 24
Motor Kit	KMD***01A	*** = motor code ref	Lowering Valve	FSLV-8-**H	** = 12 or 24
Starter Kit	KSW**S01A	** = 12 or 24 (for S motors)	N Open Valve	FOLV-8-**H	** = 12 or 24
	KSW**H01A	** = 12 or 24 (L or F motors)	Double Lock	FDLV-8-**H	

G Series POWER PACKS - ORDERING CODES



0907-A