

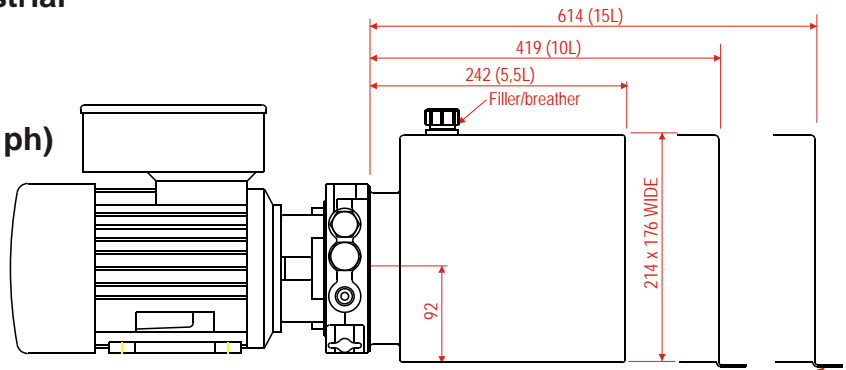
Mk3D AC POWER PACKS

Versatile range of single & three phase
Power Units for mobile and industrial
applications.

Flows to 20l/min

Pressures to 270bar

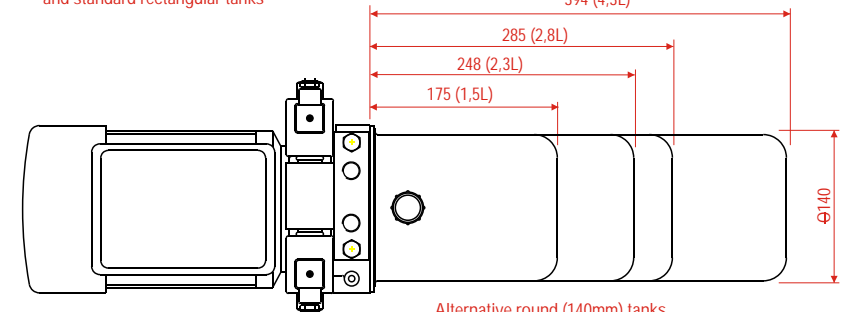
Motors up to 4kW (3-ph) 2,2kW (1ph)



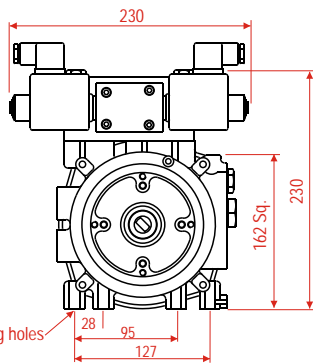
Typical assembly showing 80-Frame motor and standard rectangular tanks

FEATURES

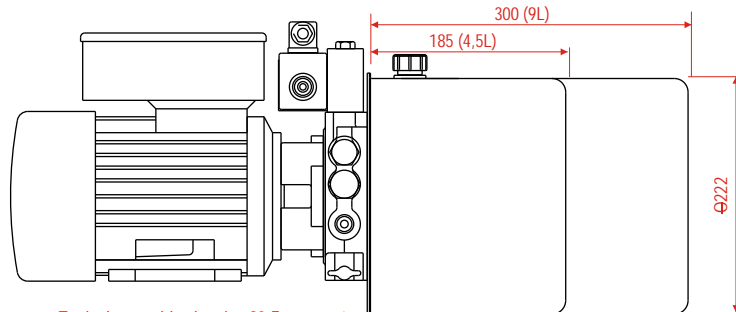
- Pressure balanced gear pump
- Quiet operation with long life
- Industry standard mounting
- Precision "quiet" relief valve
- Wide range of options
- Global support & servicing



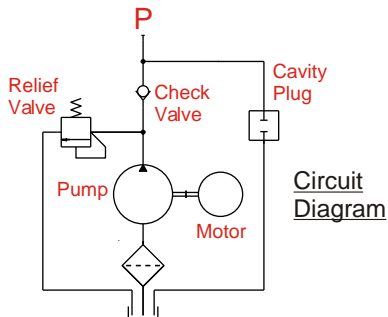
Alternative round (140mm) tanks



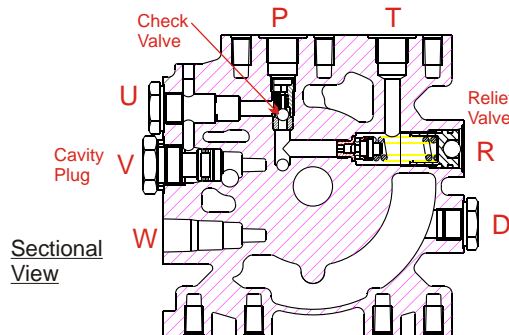
End view of pack (motor removed for clarity)
Showing optional valve block and valve



Typical assembly showing 90-Frame motor and standard 9L & 4.5L large diameter tanks



Circuit Diagram

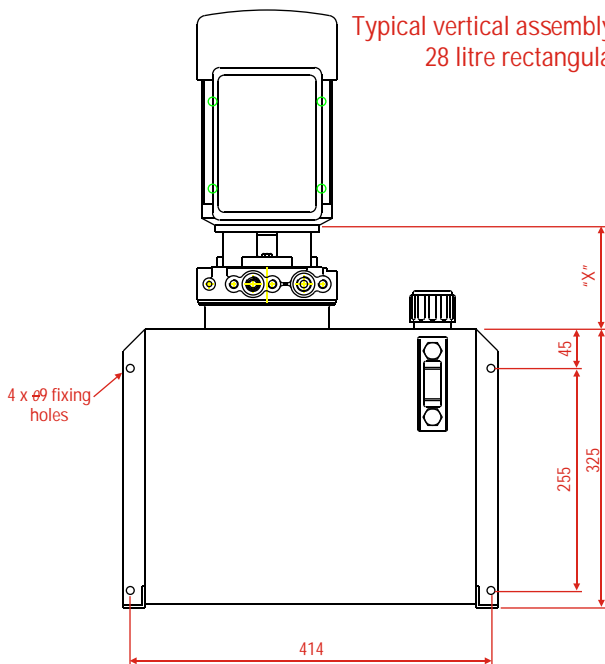


Sectional View

Ports Marked on Casting

- P = Pressure Port 3/8" BSP
- T = Tank Port 3/8" BSP
- R = Relief Valve
- D = Drain Port 3/8" BSP
- W = Not Used
- V = Valve Cavity
- U = Aux Pressure Port 3/8" BSP

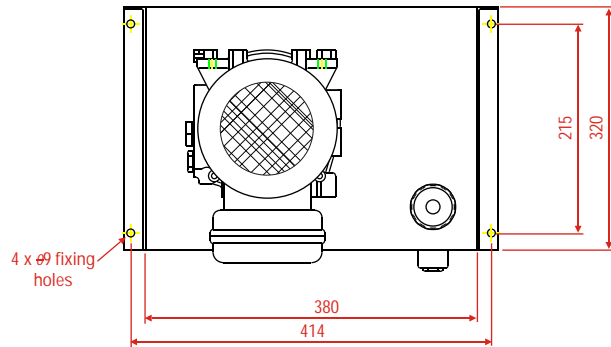
Mk3D AC POWER PACKS - LARGER TANKS



Typical vertical assembly on standard 28 litre rectangular tank

Features and Options

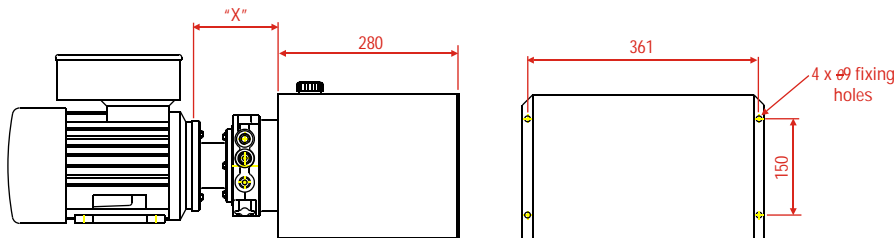
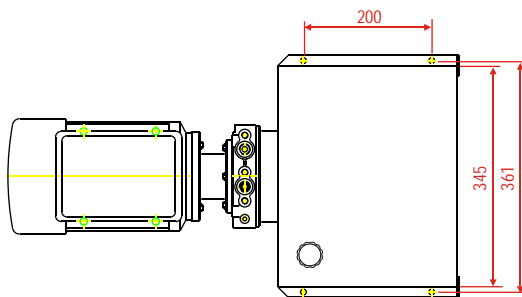
- Fixing flanges for horizontal or vertical mounting
- Large filler/breather fitted as standard
- Oil sight level gauge
- Durable black powder coat finish
- Optional return filter
- Provision for mounting circuit valves



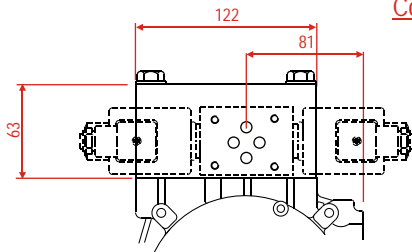
Typical horizontal assembly on standard 17 litre rectangular tank

Features and Options

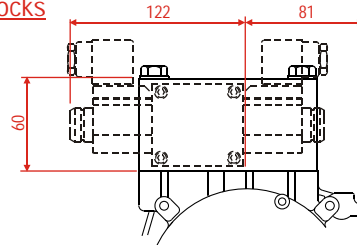
- Fixing flanges for horizontal or vertical mounting
- "Bullseye" oil level gauge
- Durable black powder coat finish
- Optional return filter
- Provision for mounting circuit valves



Control Valve Mounting Blocks



Standard Manifold for Cetop03 Valves
Kit ref KB3RNN01A



Type R Manifold for Series 35 Bankable Valves
Kit ref KB33NN01A

PERFORMANCE DATA Mk3D AC POWER PACKS

To select the pack needed refer to the charts below which list the flows and pressures available from each pump/motor combination.

Choose the power pack closest to or slightly above the flow and pressure you need.

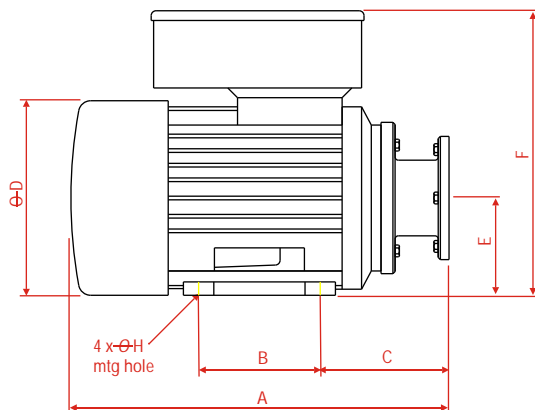
Decide whether a 1-phase or 3-phase motor is required. A 2-pole (1400rpm) motor will be lower cost than a 4-pole (2800rpm) but may be noisier.

The dimensions of the motors and couplings can be found on this page. Combine them with the basic power pack dimensions for the overall size of the whole unit.

Hydraulic Data

Pump cc/rev	Flows L/min		Maximum Pressures (bar)															
			0,37kW (D)		0,55kW (E)		0,75kW (F)		1,1kW (G)		1,5kW (H)		2,2kW (J)		3kW (K)		4kW (L)	
	4-pole	2-pole	4-pole	2-pole	4-pole	2-pole	4-pole	2-pole	4-pole	2-pole	4-pole	2-pole	4-pole	2-pole	4-pole	2-pole	2-pole	
0,8	1,0	2,0	150	90		150		200										
1,1	1,5	2,9	120	60	200	100	250	140		200								
1,3	1,7	3,5	100	50	180	85	240	110	250	180		250						
1,6	2,1	4,3	80	40	140	65	200	95	250	135		195		250				
2,1	2,8	5,6	60	30	110	50	150	75	220	105	250	150		210				
2,6	3,5	6,9	50		90	40	120	55	180	85	240	110		180		250		
3,2	4,3	8,5	40		70		95	45	145	70	195	90	240	120		200	240	
4,8	6,4	12,8			45		60	30	95	45	130	60	190	95	200	130	175	
5,8	7,7	15,4					50		80		100	45	160	75	200	100	140	

Electric Motor Data



Motor kW	Motor Frame Size				Full Load Current (A)			
	4-pole		2-pole		4-pole		2-pole	
	1-ph	3-ph	1-ph	3-ph	1-ph	3-ph	1-ph	3-ph
0,37	71B	71B	71A	71A	2,6	1,1	3,5	1,0
0,55	80A	80A	71B	71B	3,6	1,5	4,3	1,4
0,75	80B	80B	80A	80A	5,1	2,0	5,7	1,9
1,1	90SB	90S	80B	80B	7,7	2,7	7,5	2,5
1,5	90LB	90L	90SB	90S	9,7	3,5	10	3,5
2,2	100LD	100LA	100LB	90L	16,5	5,0	14	4,7
3,0			3,0	100L				6,2
4,0			4,0	112M				8,0

Motor Size	App Weight kg	Dimension Code on Diagram									
		A		B	C	D	E	F		G	H
		1-ph	3-ph					1-ph	3-ph		
71A/B	6	295	241	90	85	139	71	206	180	112	7
80A/B	9,5	317	270	100	90	160	80	234	206	125	8
90S/SB	14,2	378	310	100	119	180	90	252	217	140	9
90L/LB	17	403	335	125	119	180	90	252	217	140	9
100	26	448	373	140	131	194	100	271	260	160	11
112M	32,5		391	140	138	218	112		284	190	11

Important Notes

Motor dimensions and data are typical and may vary from various suppliers. All motors must rotate **anti-clockwise** when viewed from the fan end. All 1-phase motors are high starting torque motors (ie. will start on load). Always fit motor protection devices in case of overload.

Mk3D AC POWER PACKS - TECHNICAL DATA

Hydraulic Fluid(recommended)

Mineral hydraulic oil (HM or HV)
 For normal ambient temp range (0°C-40°C)
 ISO VG22 to ISO VG46
 Working temp (ambient) -20°C - +40°C
 Motor rotation is ANTI-CLOCKWISE on fan end.

Weight

Typical assembly (without motor) 5kg
 Each additional litre tank capacity 1kg

Maximum Pressures (see performance chart)

0,8cc	200bar
1,1 to 2,6cc	275bar
3,2cc	240bar
4,8 5,8cc	200bar

Options Available

Lowering valves (N Closed N Open Double Lock)
 Coil Voltages 12V 24V dc; 110V 230V 50/60Hz

Flow Controls (full range 0,5l/m to 13l/m)

Manifolds & Control valves Cetop03
 Manifolds & Control valves Series35
 Special Valve Blocks (eg Dock Leveller)

Special Tanks
 Weld Ring for Custom Tanks

MAIN SPARES KITS

Pump Kit	KPG**01A	** = pump code ref	Centre Plate Kit	KC3D1101A
Seal Kit	KSK3D01A		Cavity Plug Kit	KCP301A
Tank Kit	KT3***!01A	*** = tank code ref		
		! = H or V (see code)	Lowering Valve	FSLV-G-**H ** = 12 or 24
Motor	KAAN702A	Kit for 71Fr Motor	N Open Valve	FOLV-G-**H ** = 12 or 24
Adaptor	KAAN802A	Kit for 80Fr Motor	Double Lock	FDLV-G-**H ** = 12 or 24
Kits	KAAN902A	Kit for 90Fr Motor		
	KAAN102A	Kit for 100/112Fr Motor		

Mk3D AC POWER PACKS - ORDERING CODES

Z	G	2	2	1	H	2	3	S	3	N	N	X	X	X	
Motor			Pump Capacity			Tank Size (working volume)		Lowering Valve	Flow Control	Ancillary Valve	Special Code				
Y		1-phase ac	08	0,8 cc/rev		15	1,5 Litres	S	Solenoid			Allocated by manufacturer for all custom and non-standard assemblies.			
Z		3-phase ac	11	1,1 cc/rev		23	2,3 Litres	D	Dble Lock						
	D	0,37kW	13	1,3 cc/rev		28	2,8 Litres	O	N. Open			CT	Cetop 03 Subplate		
	E	0,55kW	16	1,6 cc/rev		43	4,3 Litres	N	None			35	Series 35 Subplate		
	F	0,75kW	21	2,1 cc/rev		45	4,5 Litres	X	Special			NN	None		
	G	1,1kW	26	2,6 cc/rev		90	9 Litres					XX	Special		
	H	1,5kW	32	3,2 cc/rev		R1	5,5 Litres					The products are subject to development and the manufacturer reserves the right to change the specifications without notice			
	J	2,2kW	48	4,8 cc/rev		R2	10 Litres	3	2,5 L/min						
	K	3kW	58	5,8 cc/rev		R3	15 Litres	4	4 L/min						
	L	4kW				R4	17 Litres	5	5 L/min						
	2	2-pole	Orientation			R5	28 Litres	7	7 L/min						
	4	4-pole	H	Horizontal		NN	None	9	9 L/min						
N	N	N	V	Vertical		XX	Special	N	None						
X	X	X	X	Special				X	Special						

Items THUS are non-preferred.