



Mk3D POWER PACKS

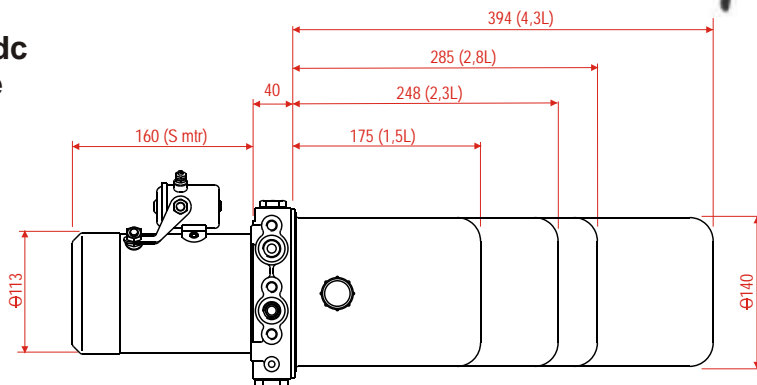
2008 Series



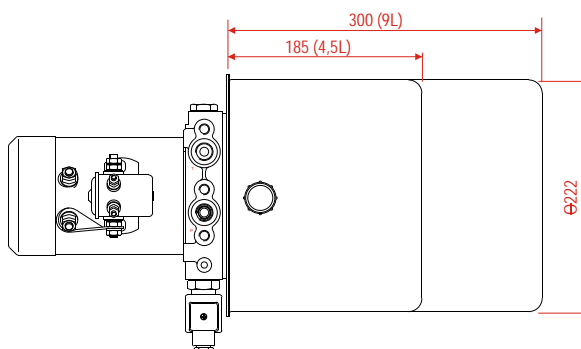
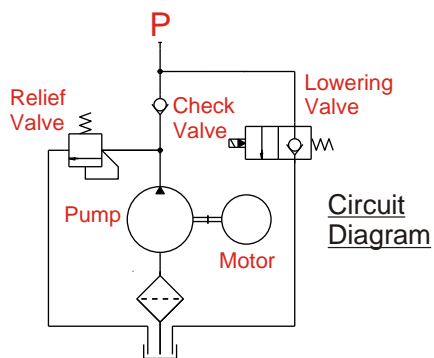
**Industry standard range of 12V & 24V dc
Power Units for a wide range of mobile
applications.
Flows to 20l/min
Pressures to 300bar
Motors 1,6kW to 3kW (nominal)**

FEATURES

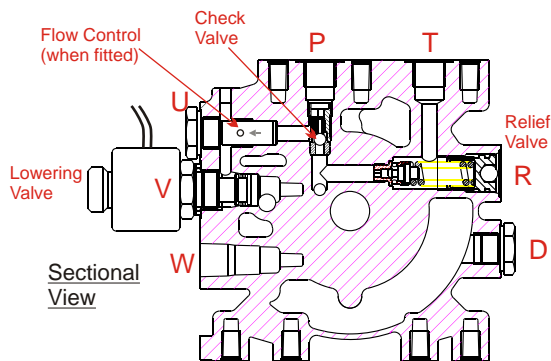
- Pressure balanced gear pump
- Industry standard lowering valve
- Industry standard mounting
- Precision "quiet" relief valve
- Wide range of options
- Global support & servicing



Typical Mk3D Pack
Featuring 4.5" (113mm) S Motor
Small diameter Tanks

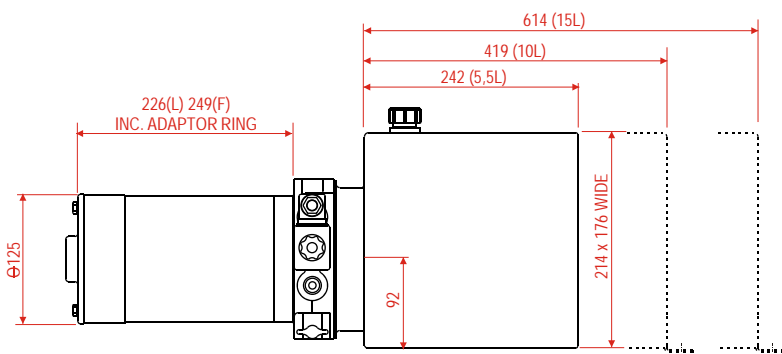


Typical Mk3D Pack
Featuring 4.5" (113mm) S Motor
Large Diameter Tanks



Ports Marked on Casting

- P = Pressure Port 3/8" BSP
- T = Tank Port 3/8" BSP
- R = Relief Valve
- D = Drain Port 3/8" BSP
- W = Not Used
- V = Valve Cavity
- U = Aux Pressure Port 3/8" BSP



Typical Mk3D Pack
Featuring 5" (125mm) L or F Motor
Rectangular Tanks

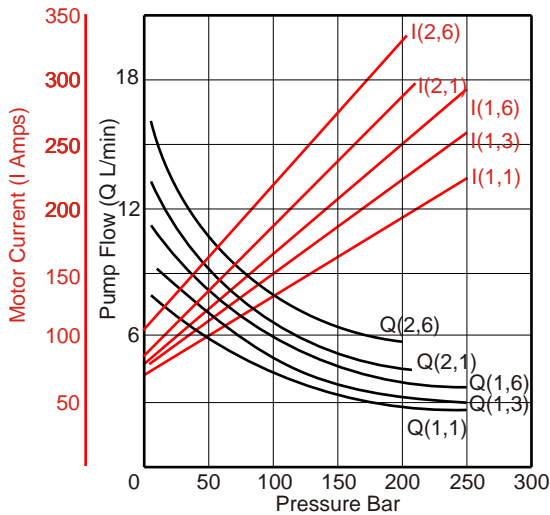
PERFORMANCE DATA Mk3D POWER PACKS

MOTOR TYPE S (Series Wound, $\varnothing 113\text{mm}$)

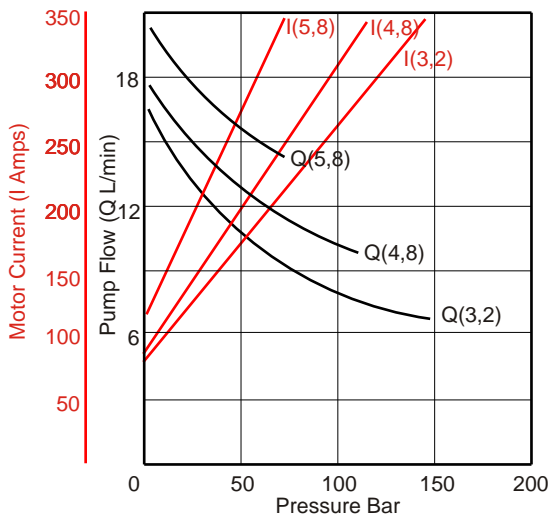
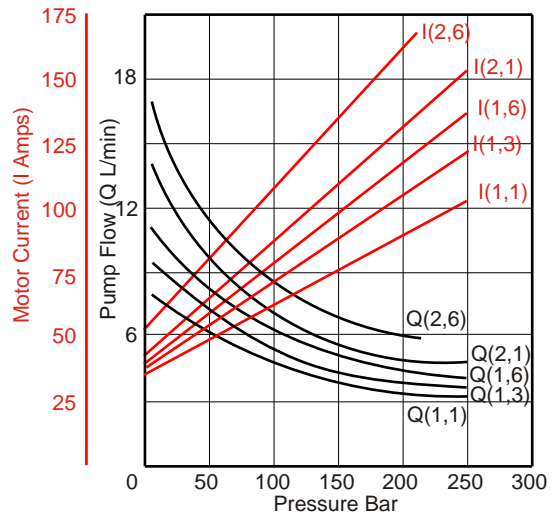
Nominal performance of pack combinations at constant voltage and at nominal $20^{\circ}\text{-}25^{\circ}\text{C}$ with ISO VG22 oil.

12V Motor

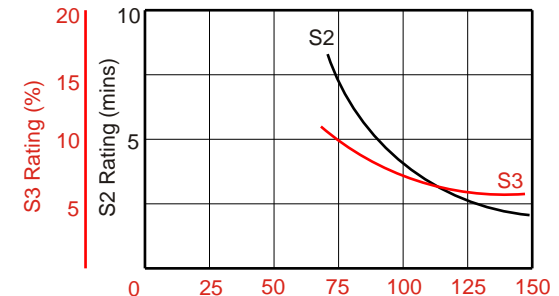
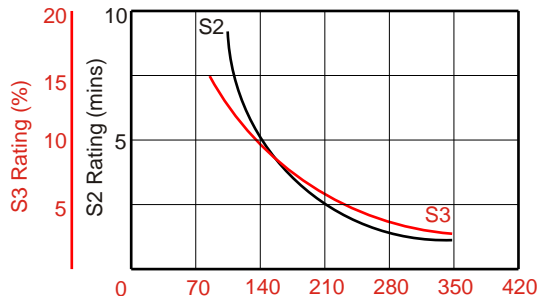
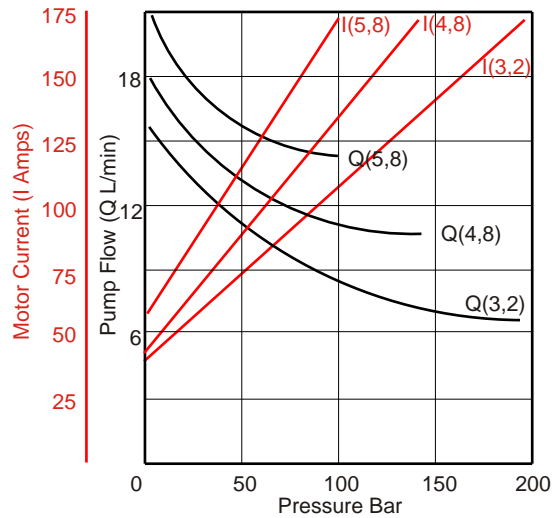
24V Motor



For Pump Capacities:
 1,1cc/rev
 1,3cc/rev
 1,6cc/rev
 2,1cc/rev
 2,6cc/rev



For Pump Capacities:
 3,2cc/rev
 4,8cc/rev
 5,8cc/rev

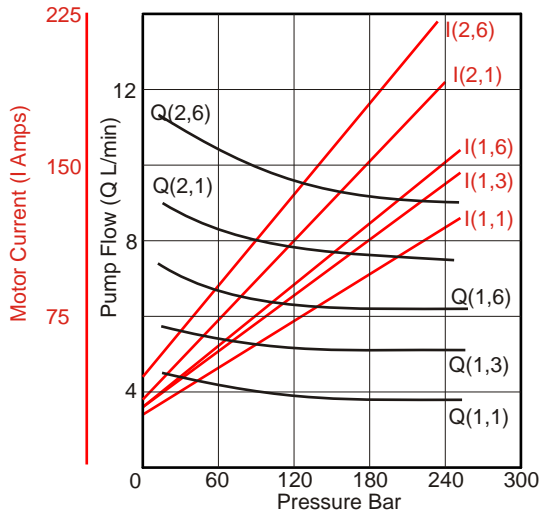


PERFORMANCE DATA MK3D POWER PACKS

MOTOR TYPES L & F (Long Rated/Fan Cooled $\varnothing 126\text{mm}$)

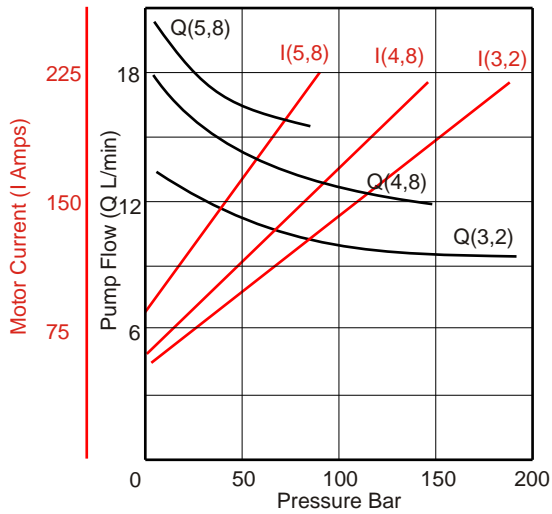
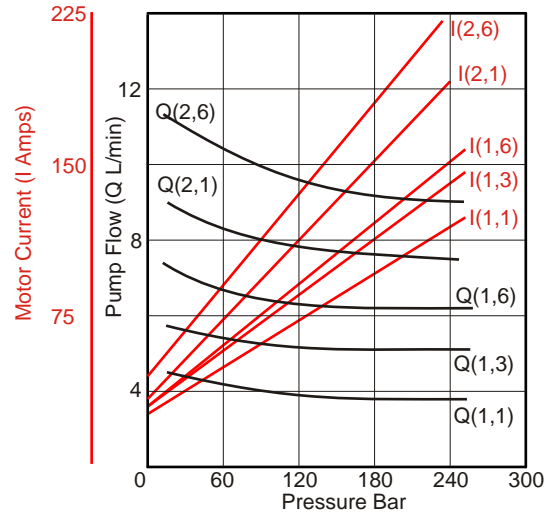
Nominal performance of pack combinations at constant voltage
and at nominal 20^o-25^o C with ISO VG22 oil.

24V 'L' Motor



For Pump Capacities:
1,1cc/rev
1,3cc/rev
1,6cc/rev
2,1cc/rev
2,6cc/rev

24V 'F' Motor



For Pump Capacities:
3,2cc/rev
4,8cc/rev
5,8cc/rev

